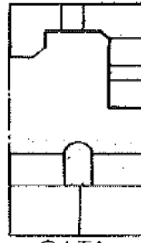
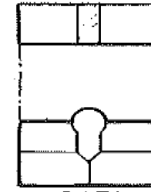


GATA

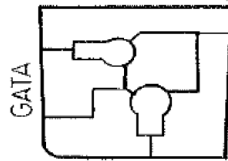


GATA



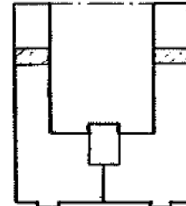
GATA

OMKRING 1880

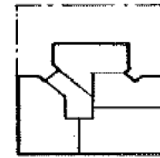


GATA

GATA

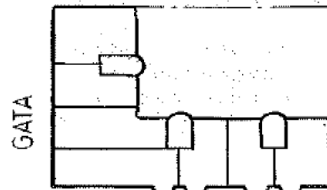


GATA



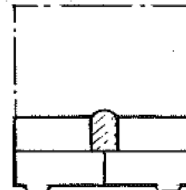
GATA

OMKRING 1900



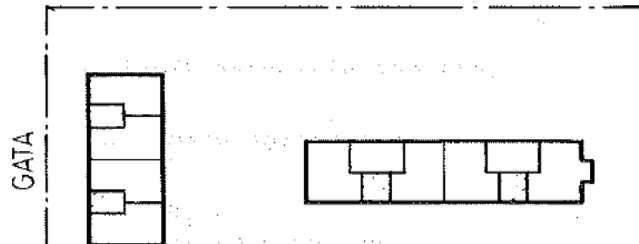
GATA

GATA



GATA

OMKRING 1920

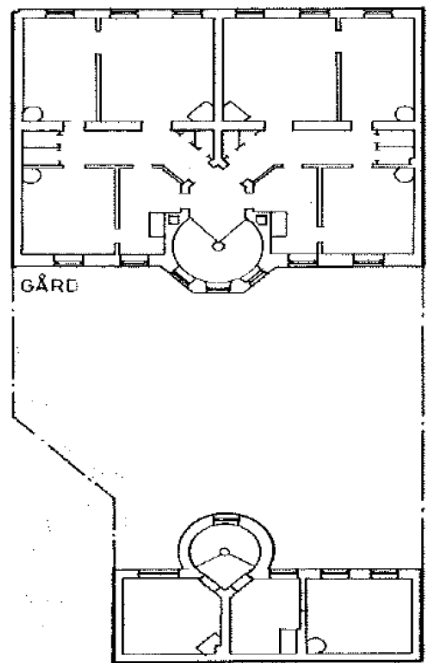


GATA

GATA

OMKRING 1940

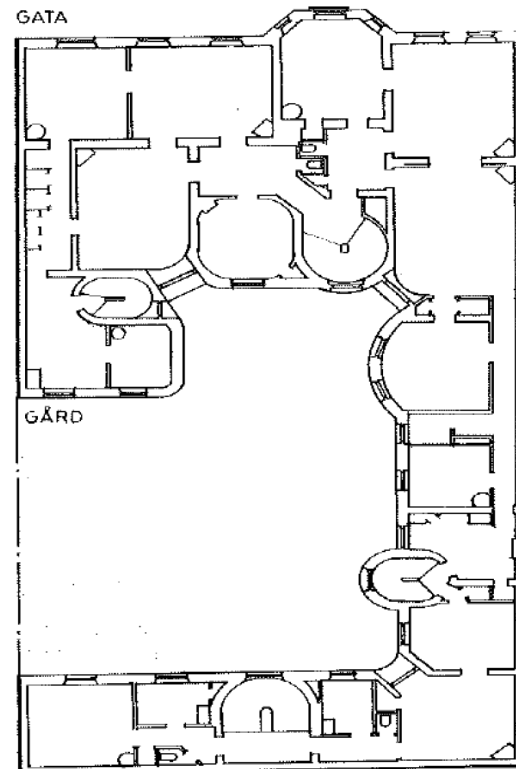
GATA HÖG STANDARD



LÅG STANDARD

1880

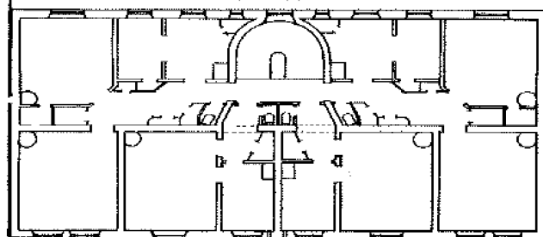
HÖG STANDARD



LÅG STANDARD

1900

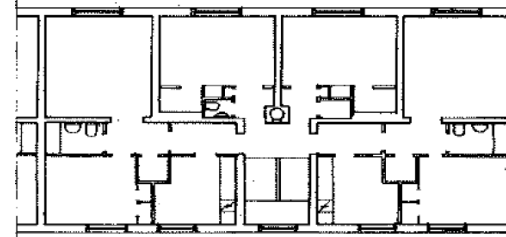
GÅRD MEDELSTANDARD



GATA

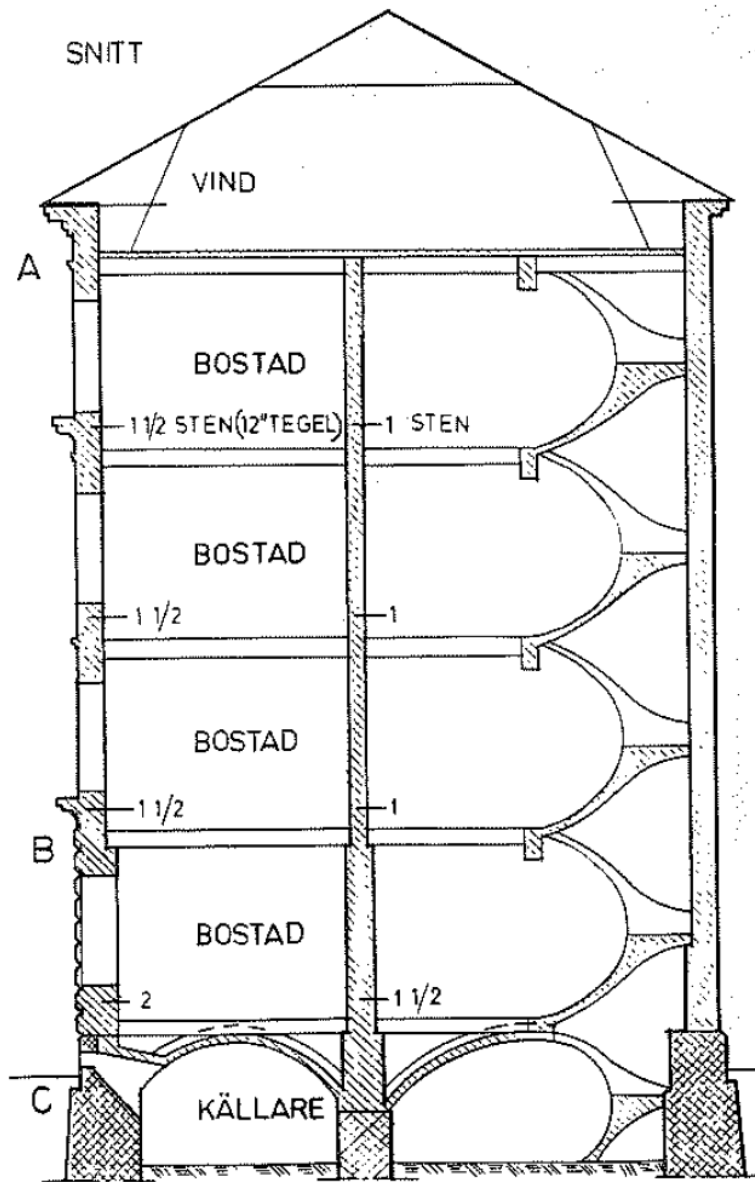
1920

GATA MEDELSTANDARD



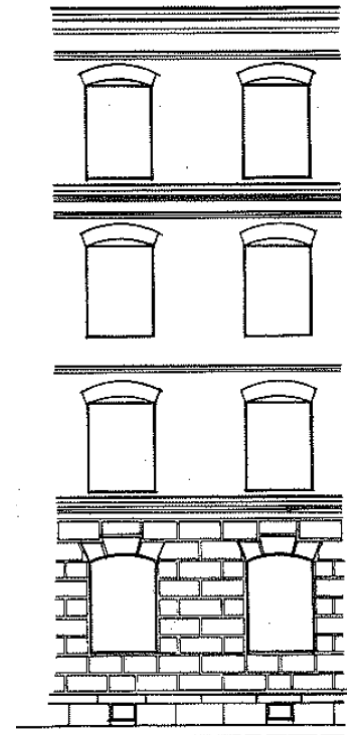
GÅRD

1940

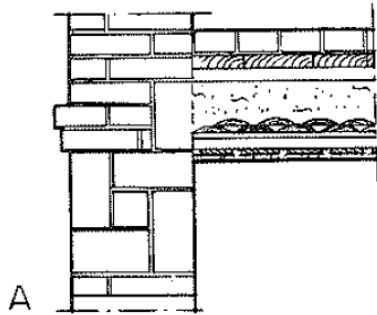


# Tegelhus Mellansverige 1870 - 95

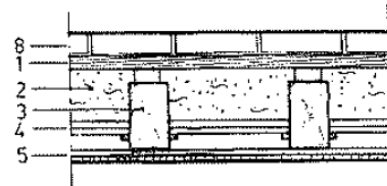
ELEVATION GATFASAD



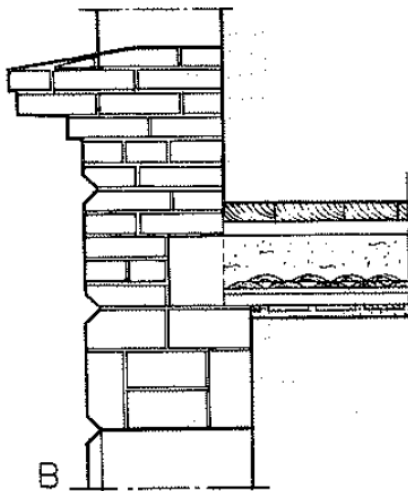
# Tegelhus Mellansverige 1870 - 95



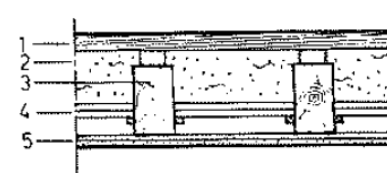
A



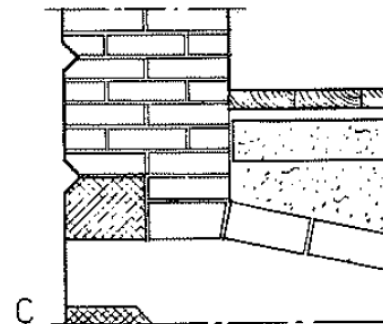
- 8 TEGEL PÅ FLATAN (BRANDBOTTEN)
- 1 GOLV 2" PÅ UTSALADE BJÄLKAR
- 2 TUNG FYLLNING (KALKGRUS, SAND)
- 3 BJÄLKAR 7"x10" c/c 0,6 M
- 4 BLINDBOTTEN 1" UTSK. M. LERTÄTNING
- 5 SPRÄCKPANEL 1"+PUTS M. DUBBELRÖRN.



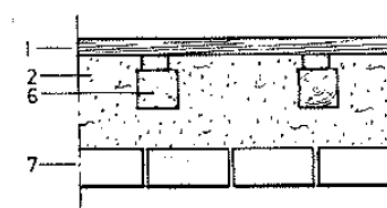
B



- 1 GOLV 2 1/2" PÅ UTSALADE BJÄLKAR
- 2-5 SAMMA SOM OVAN

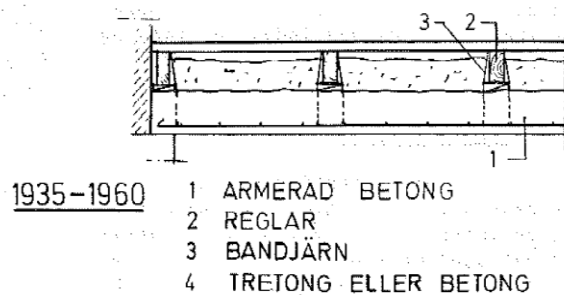
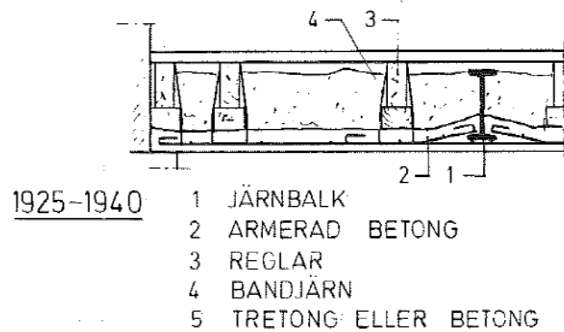
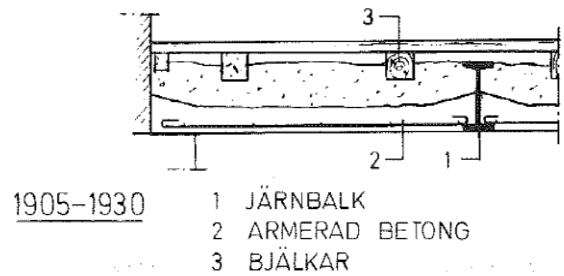
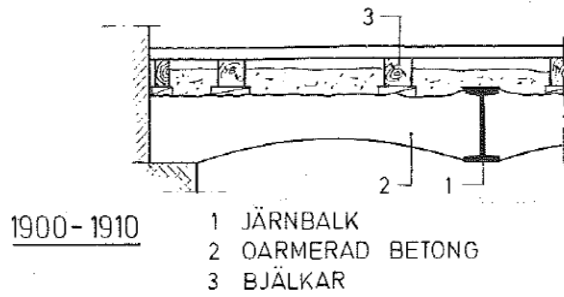


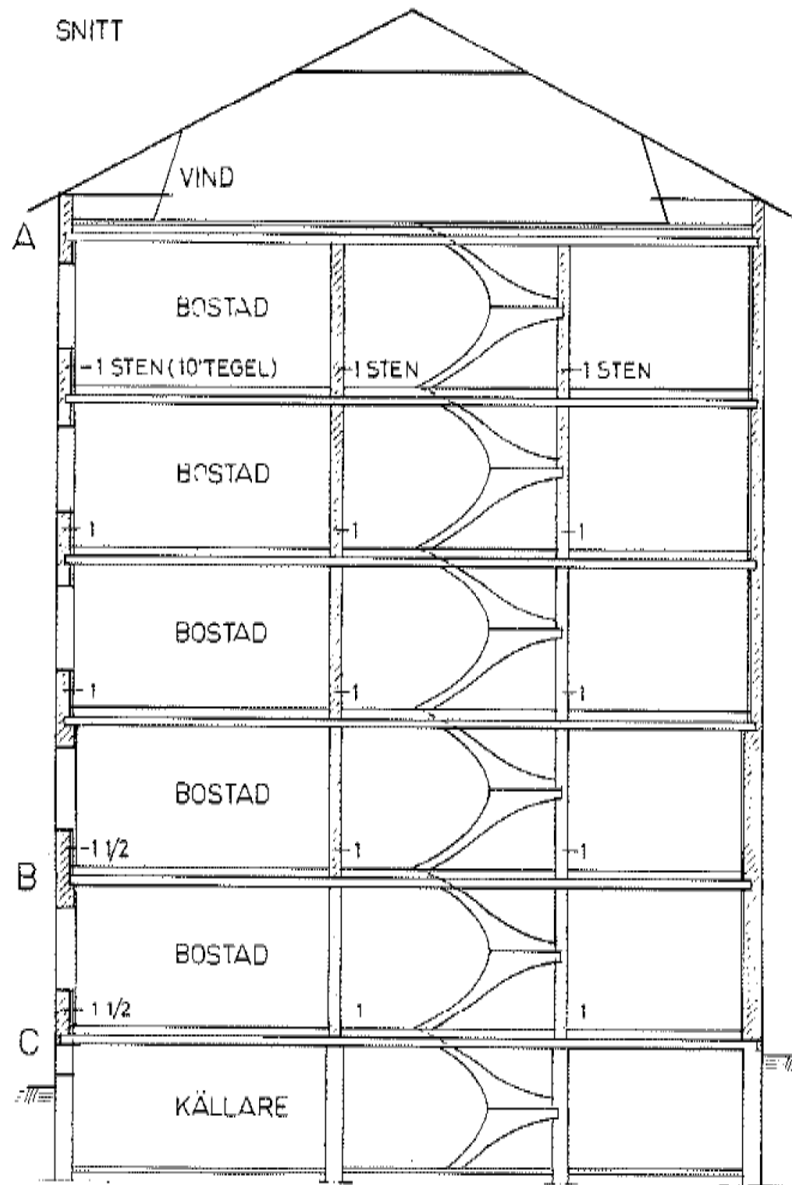
C



- 1 GOLV 2 1/2" PÅ UTSALADE BJÄLKAR
- 2 TUNG FYLLNING (KALKGRUS, SAND)
- 6 BJÄLKAR 6"x6" c/c 0,6 (FLYTANDE)
- 7 TUNNVALV AV TEGEL

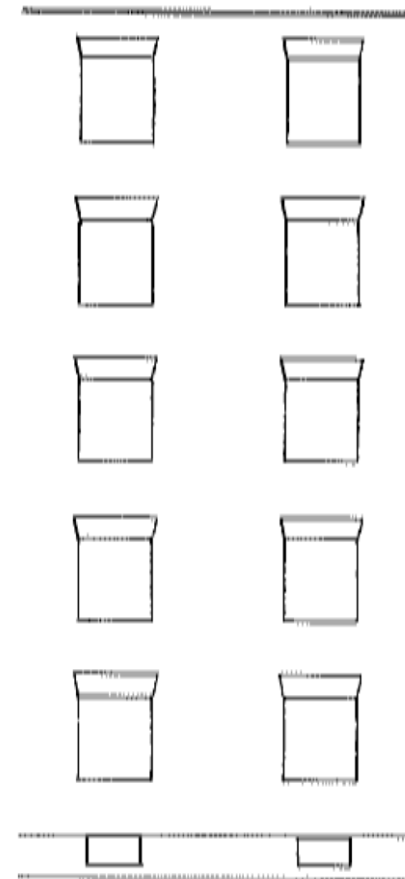
# Typiska källarbjälklag 1900 - 1960



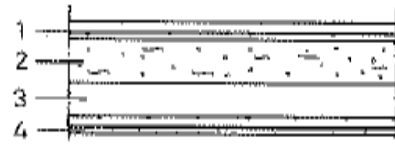
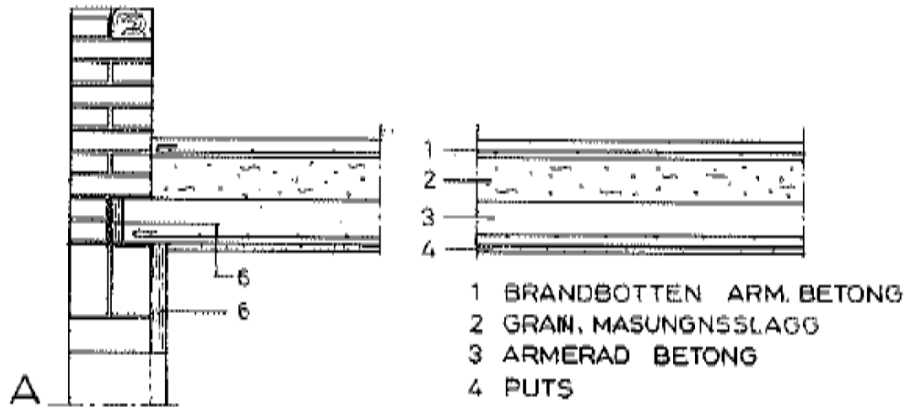


# Tegelhus Mellansverige 1930 – ca 1960

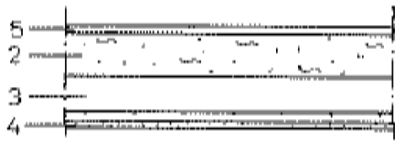
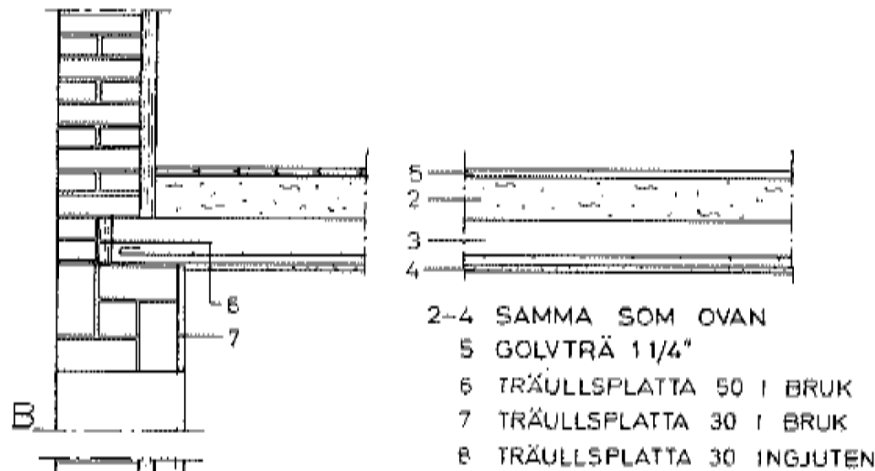
ELEVATION



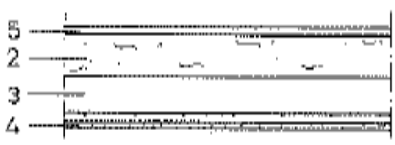
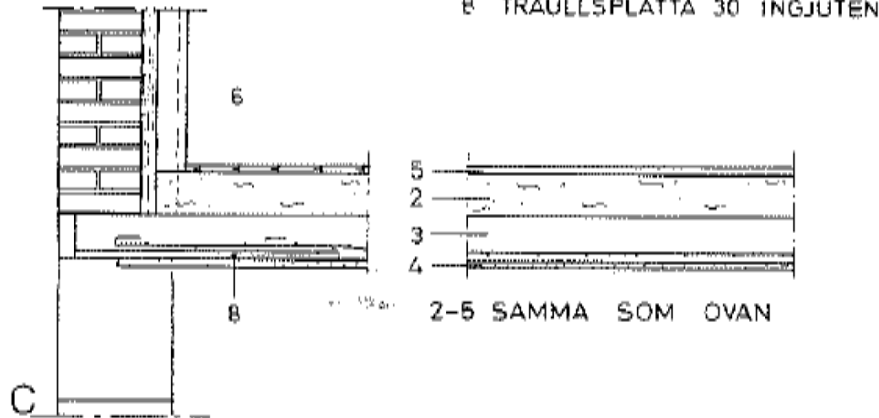
# Tegelhus Mellansverige 1930 – ca 1960



- 1 BRANDBOTTEN ARM. BETONG
- 2 GRÅM. MASUNGSLAGG
- 3 ARMERAD BETONG
- 4 PUTS



- 2-4 SAMMA SOM OVAN
- 5 GOLVTRÄ 1 1/4"
- 6 TRÄULLSPLOTTA 50 I BRUK
- 7 TRÄULLSPLOTTA 30 I BRUK
- 8 TRÄULLSPLOTTA 30 INGJUTEN



- 2-5 SAMMA SOM OVAN